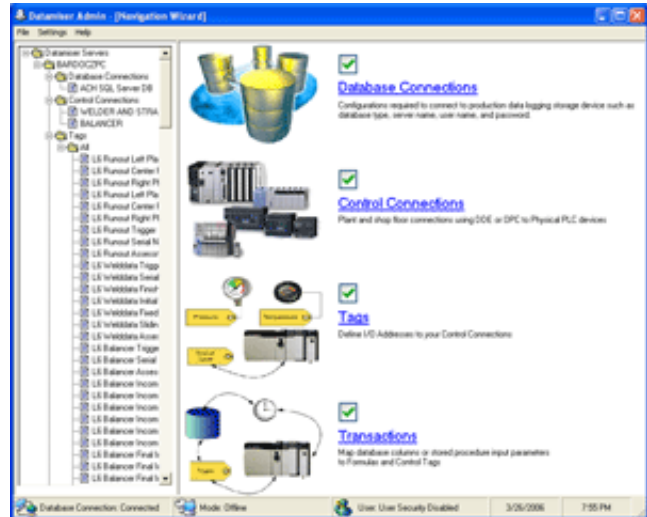


## Improve efficiencies and understand downtime

Today's competitive marketplace requires your plant to run efficiently with very little variance from specifications. The biggest problem with this goal is having the right information at the right time to meet the objective and respond immediately. More often than not, a facility is operated based on information from spot check gauging, weekly or monthly production reports, or supervisor experience based on observations. In order to be a leader in your industry – and in most cases, just to survive, you need to be able to leverage real-time information from your operation.

- Gather production data from your machines
- Generate reports based on demand or automatically deliver to your e-mail
- Produce labels, bar codes, or other print outs with production process data



## What does Datamiser do for my facility?

The Datamiser from Savance incorporates everything you need to unlock the potential of your facility. Monitoring process parameters to respond to out-of-spec thresholds, capturing cycle times to predict and control efficiency, and retrieving complete part history by scanning or entering a serial number are just a few of the major benefits of the Datamiser system. In addition to having this information available on-demand, Savance can configure the system to alert you via e-mail or pager of events that might need immediate attention. Savance can also configure the reporting engine to e-mail reports on a regular basis such as nightly or weekly.

## Will I have time to implement such a powerful system?

Implementation is not as difficult as it would seem to have all this information at your fingertips. Savance engineers will take care of working with your engineers or machine manufacturers to make the required changes to each machine in order to prepare the necessary data. Savance will also handle the entire database design and specify all of the required hardware and infrastructure including Ethernet wiring, servers, switches, UPS, PLC hardware (such as a ControlLogix gateway with a 1756-ENET and 1756-DHRIO). The only portion of the project that you need to worry about is what data you would like to collect and what type of reports and alerts you would like to receive that are specific to your process.

Feature	Description
<b>Write to Any Database</b>	Any ODBC-compliant database such as SQL Server, Oracle, or even Excel or Text is supported.
<b>Connect to any Machine</b>	Connect to any machine that supports DDE (through RSLinx), OPC, TCP/IP communications, or your custom requirement.
<b>Formula Support</b>	Use a formula to alter the data (such as for units) before storing it in the database.
<b>Instant Actions</b>	Runtime Engine alerts Dispatch Engine via TCP/IP for instant response to service actions such as label prints, bar code prints, pager alerts, or e-mail notifications.
<b>Advanced Reporting</b>	On-demand reporting to gain access to production data such as trending, process reporting based on serial number, or out-of-spec drill-downs.

